

The

# 'DANBURY'...



MOTOR CARAVAN  
ON THE NEW 1968  
VOLKSWAGEN

*'takes the biscuit'*



**DANBURY CONVERSIONS**  
LIMITED  
DANBURY, Near CHELMSFORD  
ESSEX

RING: DANBURY 2430

## INTERESTED IN THE 'DANBURY'? ...

We don't insist that you own a Great Dane in order to get the most out of your 'Danbury' Motor Caravan (a baby elephant will do).....nor do we really claim to be able to sleep a whole regiment.....but, as you will see from the photographs shown here, we can more than cope with the average family.

There are 52 weeks in the year and as we want you to get the maximum possible use and enjoyment out of your 'Danbury' during the whole year.....certain things are essential!

You must be able to travel in complete comfort, capable of cooking, dining, washing-up easily and finally, be able to set out whichever sleeping accommodation you wish.....quickly and simply. As a bonus, isn't it nice to be quite capable of carrying bulky and awkward cargo too.

### HOW DOES THE 'DANBURY' MEET THESE REQUIREMENTS . . . ?

Travelling; the two forward lockers slide back and lock in a forward facing position.....no travel sickness.....and all the cushions are of deep foam covered with Duracour.....which is easily cleaned.

Cooking; the 'Danbury' high pressure cooker (standard on all models) is functional, efficient and swings down into the front locker when not in use.....thus creating another seat.

Dining; you may easily transform the separate front seats into a bench giving seats for the whole family.

Clearing away; after the meal the washing-up is easily done in the 'Danbury' full size sink, which of course has a pumped water supply.


Bed-time; for the adults double or twin beds in a matter of moments. A kiddie sleeps across the beautifully insulated engine deck (useful point...much less noise when travelling). A further child's stretcher bunk can be easily fitted across the cab (as an optional extra).

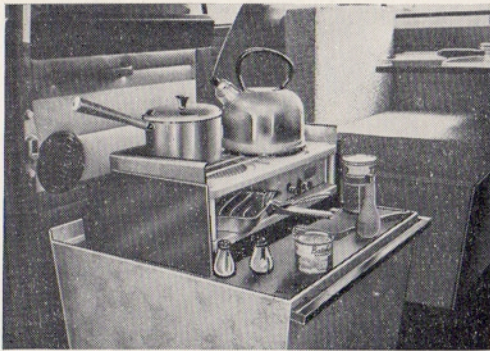
Privacy; ensured by the attractive all-round curtains on silent runners.

Extra bunks; a further two adult roof bunks can be provided when the 'Danbury' elevating roof is fitted. This is easily raised for sleeping...and just as easily secured in the storage position for travelling (again this is a purely optional extra). Alternatively, you may prefer the 'Danbury' tent which fits alongside the sliding door.....giving sleeping space for three or four extra people.

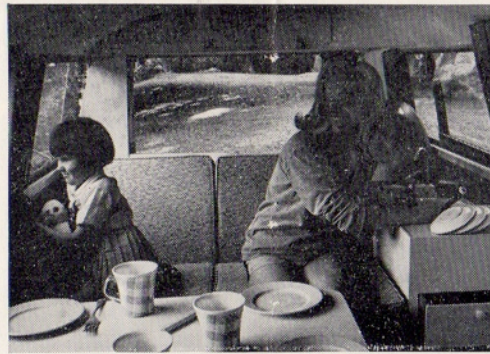
There are of course many optional extras which can be ordered.....but one thing is certain.....with the standard 'Danbury' Motor Caravan you are sure of a wonderful holiday.....free of hotel restrictions and expenses and yet you still have the revolutionary new 1968 Volkswagen Clipper or Kombi, with it's private car comfort all the year round.

... a few  
of the many  
attractive  
possible  
arrangements





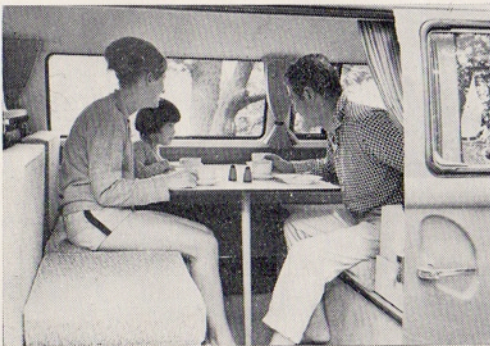
Fold-away Cooker Griller



Sink—also showing Roof Locker



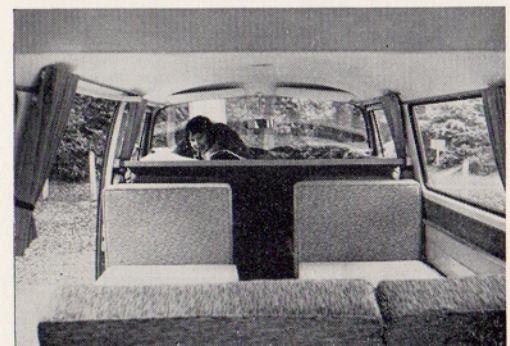
For Travelling—all Seats Face Forward



Normal Dining arrangements



L-Shaped Day Settee



Child's Stretcher Bunk in Cab



Single Bed — 6ft. × 3ft.



Double Bed — 6ft. × 4ft.



Twin Beds — 6ft. × 2ft.

# SPECIFICATIONS

## Technical Information

**PERFORMANCE:** 57 B.H.P. 27 M.P.G.

**ENGINE:** 15-84 c.c. 4 cylinder Horizontally opposed rear mounted engine. Automatic choke.

**COOLING:** Air cooling. Low maximum revs. and special engine oil cooler.

**GEAR BOX:** Floor change. 4 gears forward fully synchromesh plus reverse.

**BRAKES:** Hydraulic all four wheels. Dual circuit system with large braking area.

**SHOCK ABSORBERS:** Hydraulic on all four wheels.

**SUSPENSION:** Independent on all four wheels with new double jointed rear axle.

**ELECTRICAL SYSTEM:** 12 volt; with early cut-in generator—low current drop—high output.

**TURNING CIRCLE:** 40.4 ft.

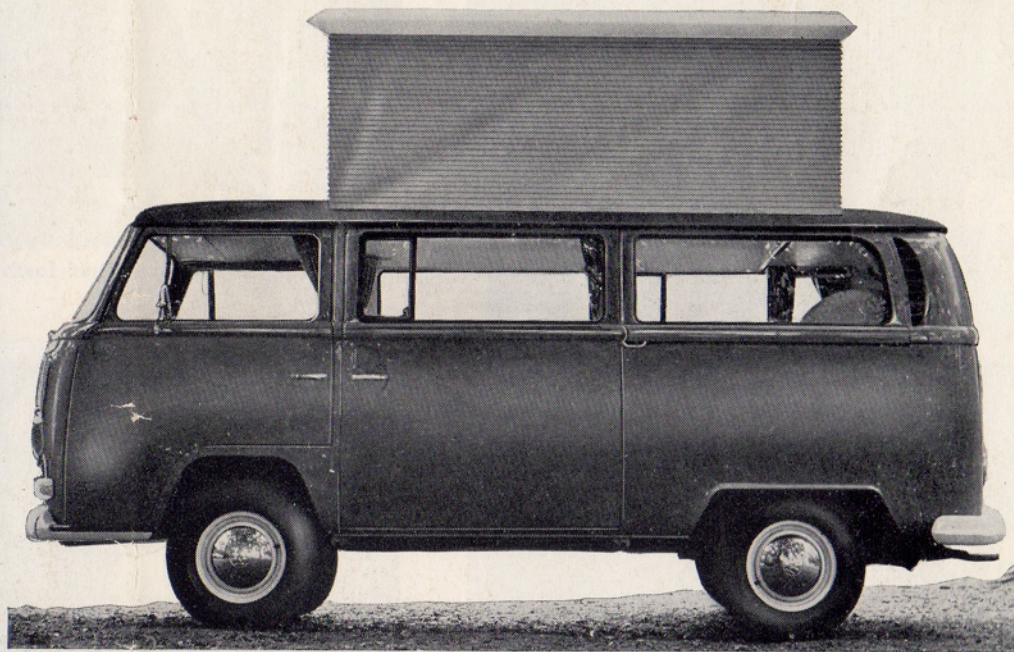
**EQUIPMENT:** Built-in heater, demister and special fresh air ventilation system; spare wheel and tyre; sunvisors; glove compartment; safety door lock; coat hooks; windscreen washer; headlight-flasher; walk-through from cab to passenger compartment.

**BODY WORK:** Choice of 4 single tones on both Clipper and Kombi with Volkswagen's usual durable finish.

**OVERALL DIMENSIONS:** Length 14 ft. 6 in. Width 5ft. 9½in. Height 6ft. 4½in.

THE 'DANBURY' WITH OPTIONAL ELEVATING ROOF

(ARTISTS IMPRESSION)



## The 'DANBURY'

SEE  
IT  
NOW  
AT

